

Repair and Installation Help from

Willcox Inc,

Corvette Parts, Service and Sales
800-588-3883 Orders
For technical assistance email us at
Willcoxcustomerservice@willcoxcorvette.com

How to install 69 Factory side exhaust on a 1968-1982 Corvette!

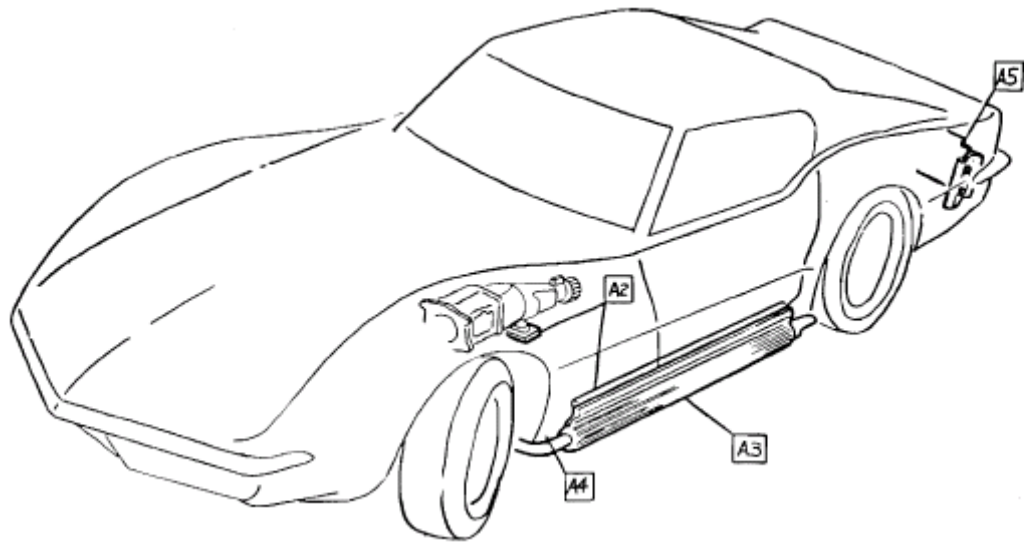
These pages are from the 1969 factory assembly manual and should show you exactly how the factory installed the exhaust on these cars.

Myths debunked:

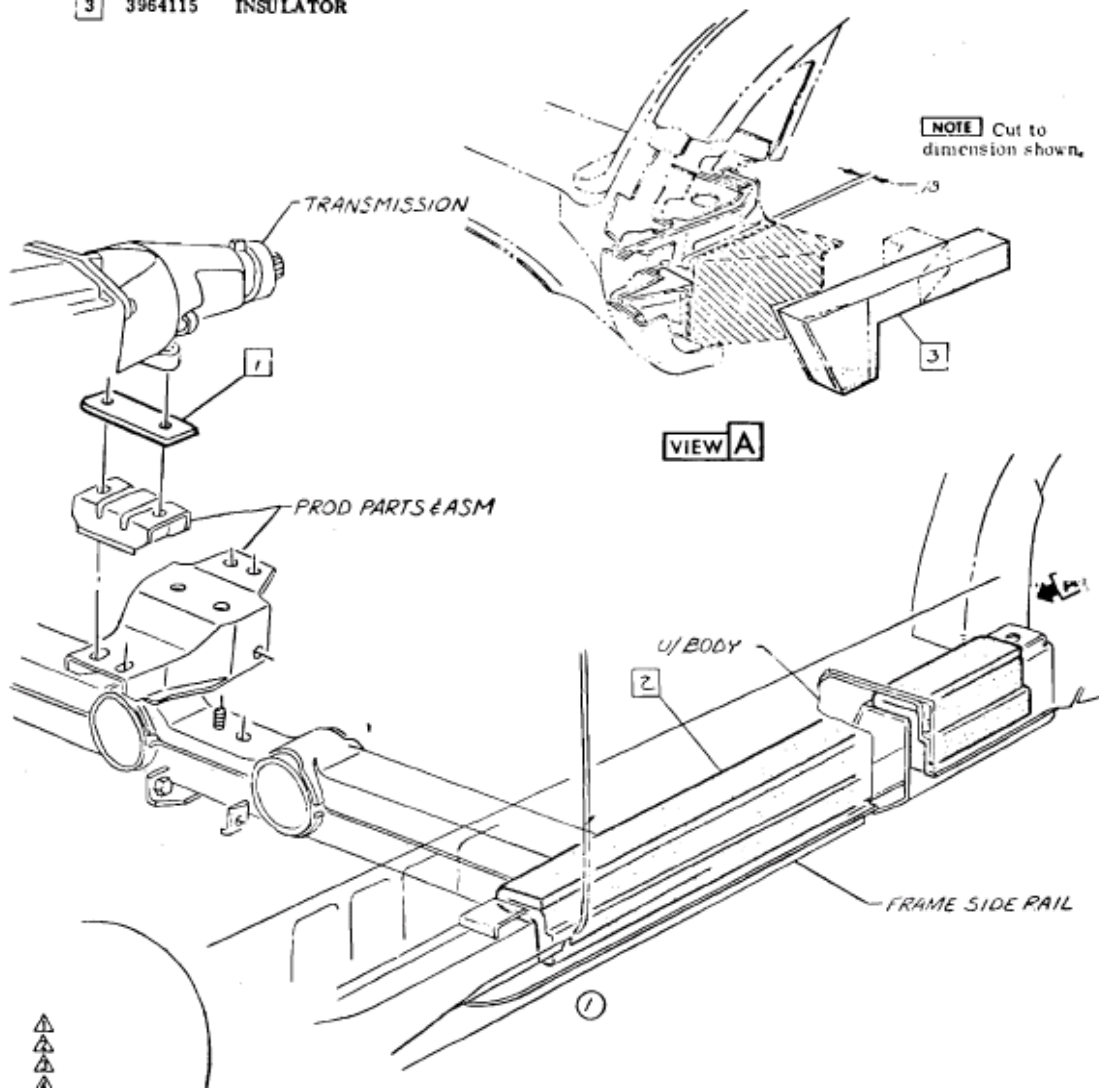
Myth: Side exhaust was available on all 1968-1972 cars! Fact: Side exhaust was only available as a factory option N14 in 1969 and no other year. The factory side pipes can be installed on just about any car from 1968-1982 with modifications as described below.

Myth: My car has 2 1/2" exhaust manifolds and came from the factory with side pipes! Fact: No production Corvette after the year 1965 came with a small block engine with a manifold flange larger than 2". While it was common to switch exhaust manifolds on a 1969 car, people that did so were forced to make changes to the exhaust header pipe to accommodate the larger flange on the manifold. GM never offered a 1969 small block side exhaust pipe with a 2 1/2" flange. The original pipes did start out as 2" pipes at the manifold and increased to the 2 1/2" size right below the manifold.

Fact: No myth to debunk here! To install factory pipes on your car you must run either an exhaust spacer or the heat riser valve. All factory cars came with one (even big block). If you do not run this on your car the pipe will not mount properly to the exhaust manifold.

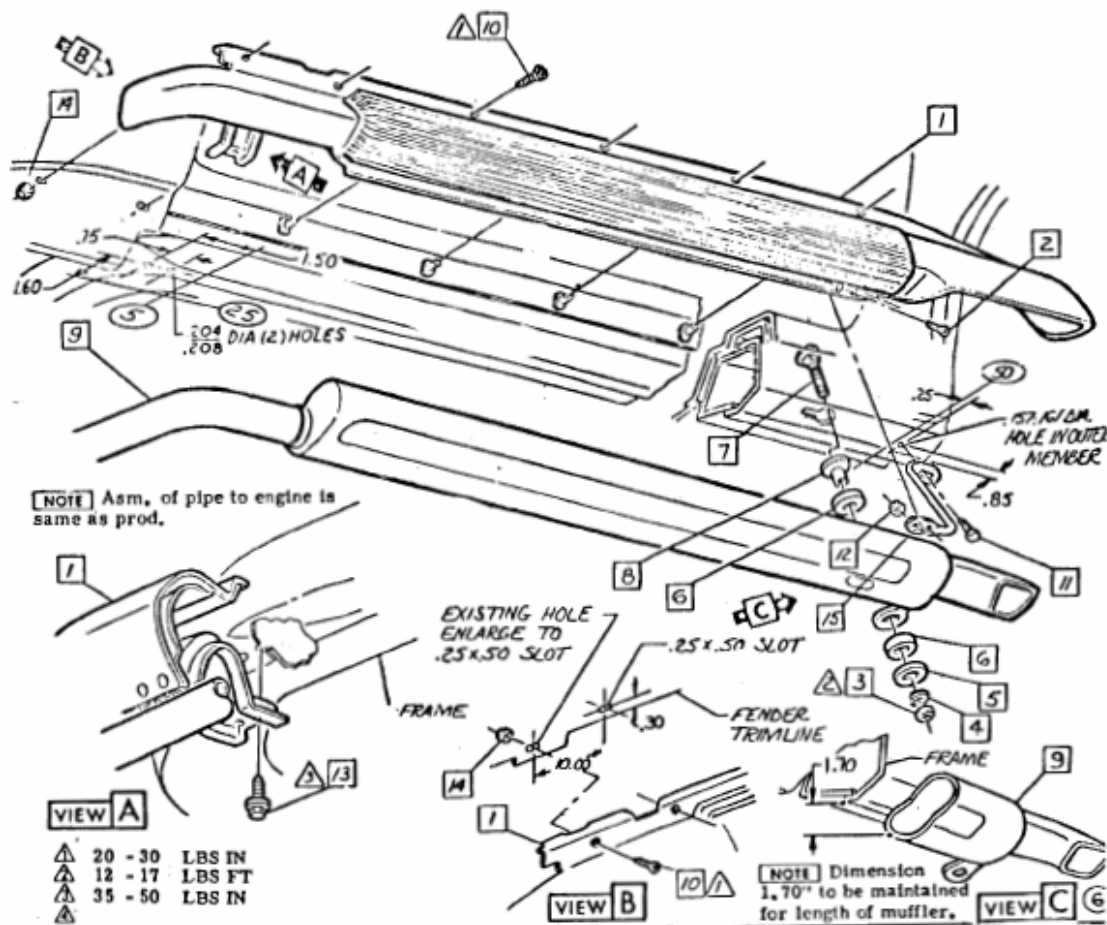


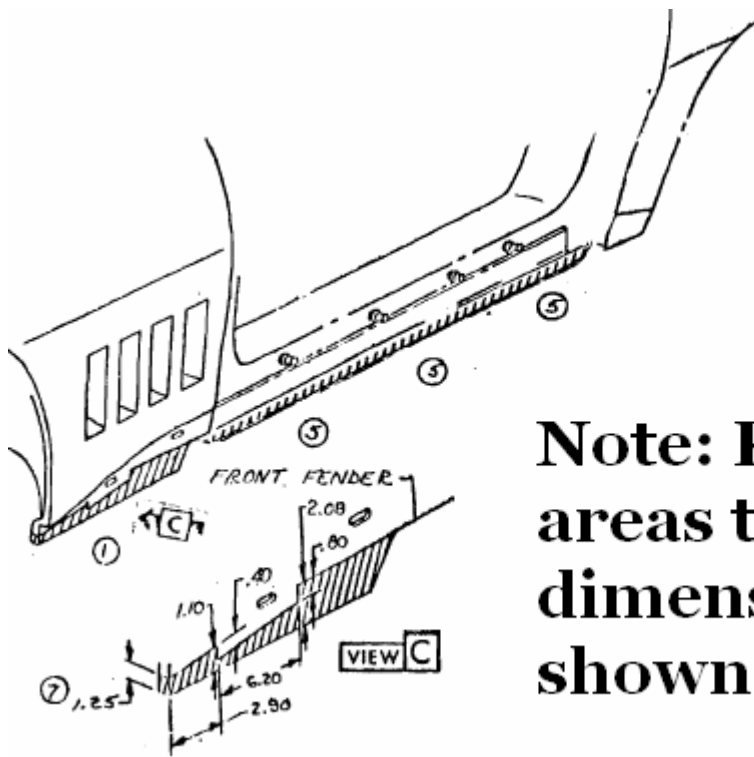
3 3964115 INSULATOR



To install factory exhaust, the assembly manual shows the insertion of a spacer plate between the production rear transmission mount and the tail housing. Unless you plan to show your car NCRS, you do not need to remove the existing rear exhaust hanger and install a spacer.

The seals shown as item 3 in View A will more than likely will not be on your car when you install the pipes. The odds are that this item will have fallen off over the years. If the insulator is still there, it must be altered as shown.





Note: Remove areas to dimensions shown!

You must remove the front lower section of the fenders on both sides as shown in the picture above! Remove only the shaded area for the needed clearance for the pipe and the covers.

Good luck with your installation!

Willcox Inc.

Copyright Willcox Inc. 2008 all rights reserved. Duplication with out expressed written permission strictly prohibited. Willcox assumes no responsibility for broke or damaged parts caused by errors or following these instructions. As with any repair, use your own judgment.